

The Nittany Lion Consulting Group

SPRING 2026 NEWSLETTER



Spring 2026 Clients



Unilever



CLEAN
PLATE



INFINIARC

U T A



PennState
College of Medicine



PennState
Smeal College
of Business



Amarel
THE HOW COMPANY



BARCLAYS



**industrial
engineer·ai**



PennState

Spring 2026 Events



Corporate Networking

NLCG hosted Corporate Networking Night at the Eric J. Barron Innovation Hub, bringing together students from NLCG and CTP to connect with our corporate sponsors. Attendees gained valuable insight into consulting through conversations with industry professionals and alumni. Additionally, students had the opportunity to participate in virtual coffee chats, further expanding their exposure to different consulting pathways and recruiting insights.



Philadelphia Trip

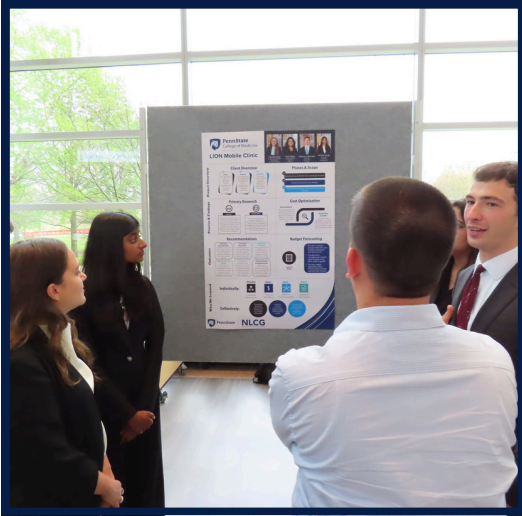
NLCG members traveled to Philadelphia for an overnight visit with two of our corporate sponsors, PwC and Deloitte. Students connected with Penn State and NLCG alumni, gained insight into careers in consulting, and experienced professional environments. Members also participated in the “Impact Beyond the Bottom Line” panel and an alumni networking breakfast, creating meaningful opportunities to learn, build connections, and strengthen relationships.



Organizational Engagement

The Organizational Engagement team hosted many events to strengthen the community and reinforce NLCG’s values, including Honor and Integrity Night and Community Service Night with the Jared Box Project. The team also organized an end-of-semester celebration dinner to recognize NLCG’s growth and achievements. Organizational Engagement continues to foster the value of belonging within the organization.

Success & Growth



Smeal College of Business Experiential Learning Showcase

Teams presented their work at the Smeal Experiential Learning Showcase, where faculty, clients, community members, and student peers engaged directly to understand their analysis, recommendations, and impact. The event showcased the breadth and quality of work delivered throughout the semester. It served as a testament of NLCG's commitment to driving meaningful impact through experiential learning.



Welcoming Associate Class of Fall 2026

NLCG welcomes 15 new associates to the Fall 2026 Associate Class. This class brings diverse perspectives that will continue to drive the organization. Welcome to the Organization: Kabeer Ali, Yilmaz Erkan, Aidan Catanzaro, Anjali Chokshi, Karen Chin, Ella Gaddis, Rejat Krishnan, Ryan Lee, Noah Levine, Zhaohang Liu, Kennedy Molakal, Molly Oberding, Shawn Padykula, Emaan Rajput, and Sachita Upadhya!



Wells Fargo Announced as an Industry Sponsor

NLCG is proud to welcome Wells Fargo as an industry sponsor! This partnership will provide members with valuable opportunities to engage with industry professionals and deepen their understanding of the financial services sector. The organization looks forward to working together on initiatives that support professional development and make a meaningful impact.

NLCG Case Competition Success



NLCG Students Win 2026 Deloitte National Undergraduate Case Competition

Jack Patti, Anwita Janga, Maria Mejia, and Akshaya Venkatesh won first place at the 2026 Deloitte National Undergraduate Case Competition at Deloitte University, competing against top teams nationwide to solve real-world business challenges under time pressure. Their national title highlights the analytical rigor and collaborative problem-solving that define NLCG.



NLCG Students Compete at the Corvinus Cube Case Competition

Cole Brady, Andrew Keddie, Ruby Bjalme, and Leah Hayes competed against teams from 7 countries in Budapest. The experience pushed the team to blend rigorous research with creative problem-solving. It served as a competitive platform and a cultural exchange. They experienced how business challenges are approached from international perspectives.



NLCG Students Place 4th at the Georgetown McDonough Business Strategy Challenge

Alison Glaz, Mahika Chatterjee, Colton Shiry, and John Papadopoulos competed in the Georgetown McDonough Business Strategy Challenge, finishing 4th out of 19 teams. The competition focused on a real nonprofit, where teams' recommendations supported community impact. The team delivered research-backed strategies, reflecting the applied consulting skills emphasized throughout NLCG.

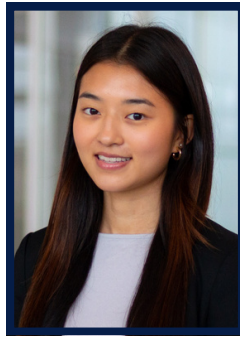
Congratulations, Graduating Seniors!



**Jaiden
Asch**



**Hunter
Badamo**



**Sophie
Bang**



**Joshua
Bisanga**



**William
Bonawitz**



**Matthew
Corr**



**Regan
DeHaven**



**Isabella
Fernandes**



**Timothy
Fiedler**



**Clarissa
Garcia**



**Aryan
Garg**



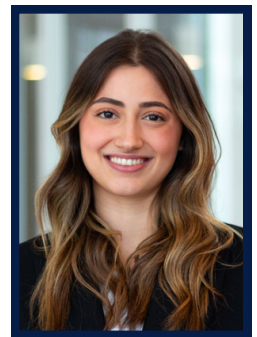
**Jayant
Gupta**



**Leah
Hayes**



**Grace
Hubbard**



**Luciana
Lavarreda**

Congratulations, Graduating Seniors!



**Jack
McCormack**



**Adrian
Michael**



**Jackson
Mopsick**



**Ashton
Murray**



**John
Papadopoulos**



**Mariana
Seiffer**



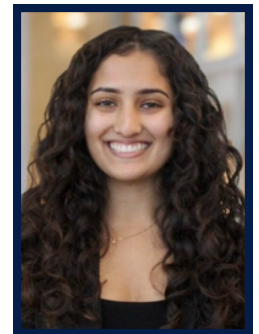
**Mckenna
Schrenk**



**Caleb
Shuman**



**Colton
Shiry**



**Arushi
Singh**



**Lauren
Tannenbaum**



**Sophia
Winnick**

Legacy Award Recipients

Each semester, NLCG presents four Legacy Awards to members who exemplify the organization's core values through exceptional dedication and impact.



The Gus Colangelo Award for Passion and Belonging was awarded to **Liza Lukashin**



The SCNO Legacy Award for Results and Impact was awarded to **Claudia Mejia Cerdas**



The NCG Legacy Award for Excellence and Integrity was awarded to **Josh Ponzio**



The SilverBack - Tenured Member Award was awarded to **Caleb Shuman**

Graduating Senior Placements



McKinsey
& Company



Goldman
Sachs



Deloitte. **accenture**



Grant Thornton



Thank You for an Incredible Semester!

This semester reflected growth and results. We look forward to expanding our impact, and we are grateful for the continued support of our sponsors, faculty, and members.



Deloitte.



How You Can Support NLCG

Make a Donation to Support the Program:

<http://raise.psu.edu/NLCG>

Learn About Being a Client:

Contact Rishita Kadre at rbk5531@psu.edu

Learn About Being a Corporate Sponsor:

Contact Alexis Wagner at anw5838@psu.edu

General Questions:

For all other inquiries, email us at nlcg@psu.edu

